

Pressure, Flow and Turbidity measurements in one device

The Flowmaster_PFT provides the most reliable and accurate Pressure, Flow and Turbidity measurements. Perfect for live measurements, delivering verifiable and traceable data for your reports when paired with AquaVault.

Measures flow rates to 50 lps, turbidity to 40 NTU pressure to 25 bar. No moving parts which in turn means that measurements are not affected by debris in the water stream.

Applications

- Flushing
- Trunk Mains Conditioning

Features

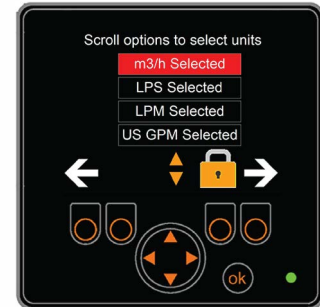
- Flow, Turbidity and Pressure Measurements All-in-One Unit
- Simultaneously Logs Flow, Turbidity and Pressure
- App to Send Log Files to Cloud
- Robust Compact and Portable
- One-Man Lift device



Readout



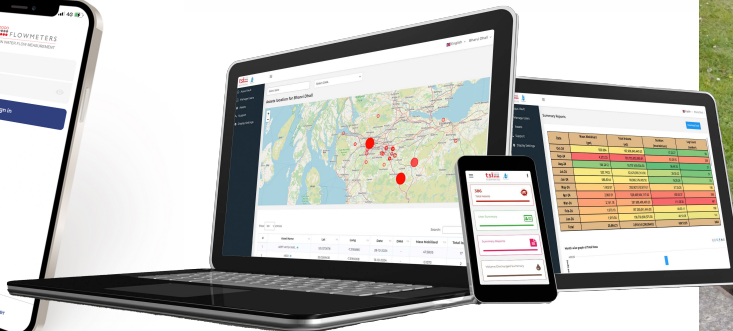
All Information On One Display



Units of Choice



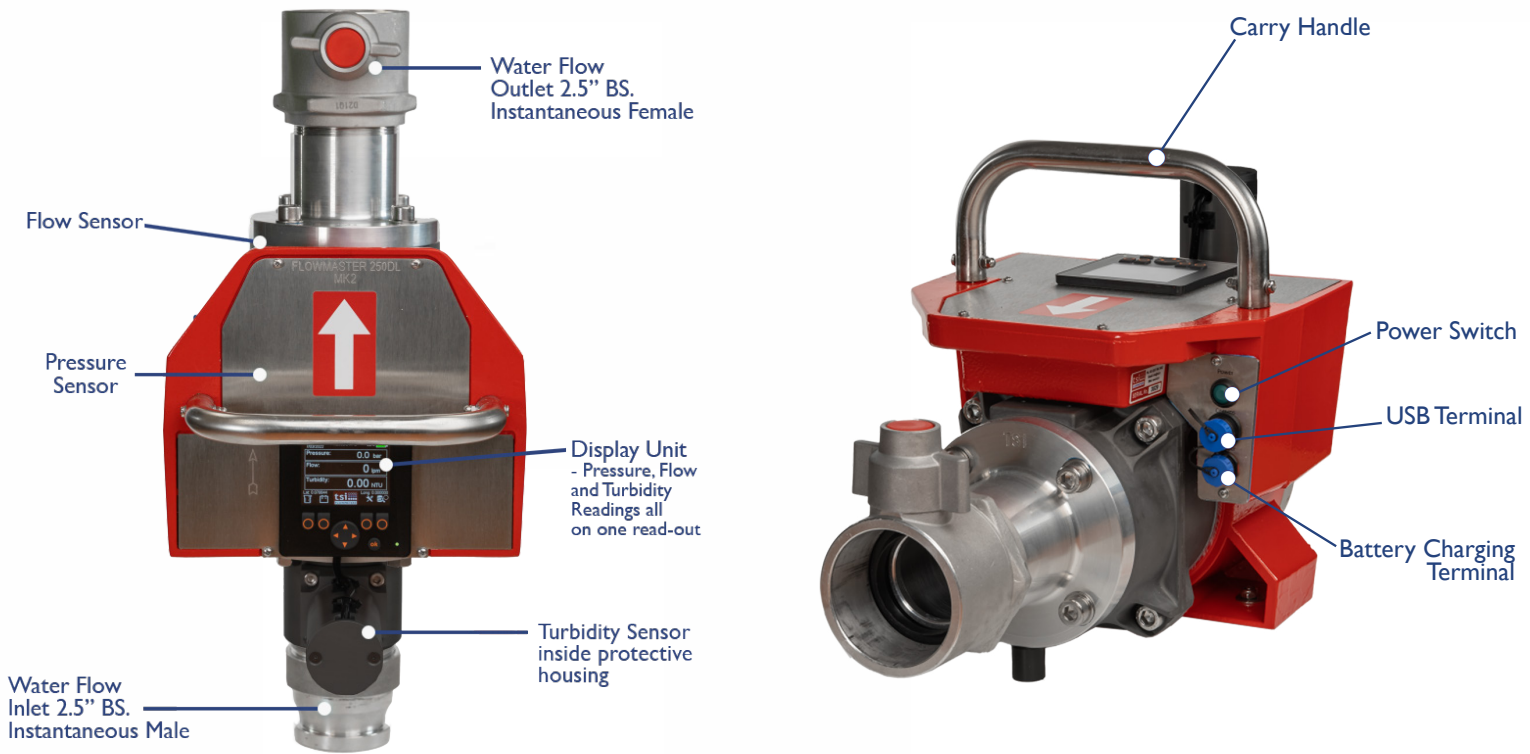
TSI Mobile App for Data Collection and Cloud Storage



AquaVault is a Cloud Dashboard for Data Visualisation and Network Insight



Flowmaster_PFT M-Node for Real-Time Flow, Pressure and Turbidity Monitoring



Lightweight & Portable



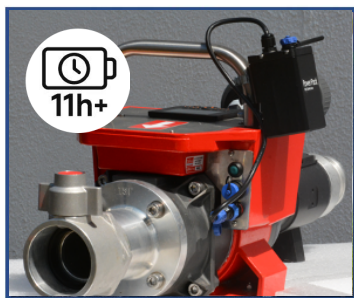
TSI App & Bluetooth



Robust Engineering



Travel Case Available
interior compartments for the
Flowmaster & its accessories



External Battery Pack
to extend operating time

Other Adaptors Available

Including:



Storz 65/B/C



NH (National Hose)



Ball Valve/Gate Valve

Technical Data Flowmaster_PFT M-Node

(EN ISO 12100-1, EN ISO 12100-2, EN 60204)

Flow Meter Type: Electromagnetic

Battery power supply: rechargeable Li-Ion Battery, 10 hours operation
time 12V DC, 2.6 Ah, separate Li-Ion charger included with delivery

Dimensions: 210 mm height, 240 mm width, 520 mm depth

Weight: 14 kg.

Housing: Aluminium

Accuracy: 30 to 750 L/min \pm 15 L/min, >750 L/min \pm 2%

Turbidity Sensor: Badger Meter ATI UK M-Node (0-40 NTU)

Display Type: 320x240 pixel Backlit Graphic Colour Display

Pressure Transducer: Operating Range: 0 - 25 bar / 0-350PSI (\pm 1%)

Working temperature: -10 to +50°C